



YOSHIMURA

RESEARCH&DEVELOPMENT OF AMERICA, INC.

5420 DANIELS STREET STE A, CHINO CA., 91710 · (800)634-9166 · (909)628-4722 · FACSIMILE (909)591-2198

www.yoshimura-rd.com

YOSHIMURA PERFORMANCE EXHAUST SYSTEM

2008-2009

**YAMAHA
TMAX**

1390002	R77 FULL SYSTEM WITH CARBON FIBER SLEEVE
1390006	R77 FULL SYSTEM WITH STAINLESS STEEL SLEEVE



THIS PRODUCT IS DESIGNED FOR USE IN CLOSED COURSE RACING AND IS NOT INTENDED FOR HIGHWAY USE.



NOTE: IN THE STATE OF CALIFORNIA, IT IS ILLEGAL TO MODIFY THE EMISSION CONTROL SYSTEM. WHICH INCLUDES THE CARBURETORS OF ANY VEHICLE.

Caution: Exhaust system can be extremely hot. Let motorcycle cool down before beginning installation. Always wear hand and eye protection and take precautionary measures to avoid injury.

Note: Read through all instructions before beginning installation.

Tools Needed:

- Metric Socket Set
- 3/8" ratchet and extension
- Metric Combination Wrench Set
- Small Flat Head Screw Driver
- Torque wrench

Installation Steps:

1. Exhaust removal/ installation preparation.

Note: These steps are necessary for removal of certain stock components and installation of Yoshimura exhaust system.

-Remove right side cover as shown in Fig. 1. Unplug O2 sensor connector.

-Remove the small undertail cover (Shown in Fig. 2) by removing the two push rivets.

-Disconnect the taillight connector.

-Lift the seat.

-Remove the four bolts shown in Fig. 4.
(Note: This will remove the rear fender.)

-Remove the rear fender/ license plate holder.



Fig. 2

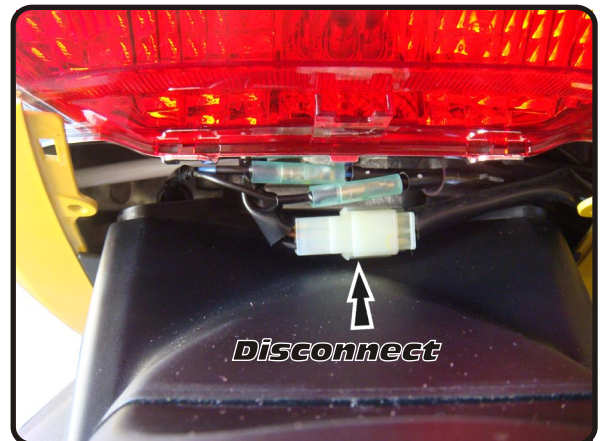


Fig. 3



Fig. 1

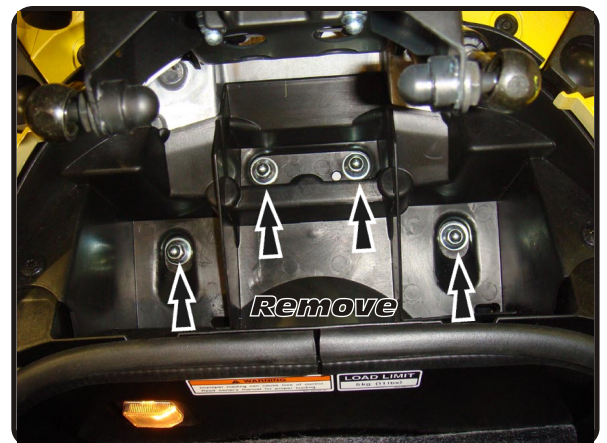


Fig. 4

- Remove the undertail by removing the push type rivets. (Fig. 5)
- Remove O2 sensor from stock exhaust system.
- Remove header nuts. (Fig. 6)
- While supporting muffler remove muffler mounting bolt.
- Remove stock exhaust system from bike.
- Remove muffler mounting bracket shown in Fig. 7. (Note: Stock muffler mounting bracket will not be used with Yoshimura system. Using a low profile open end 14MM wrench will ease removal and installation of the nut.)

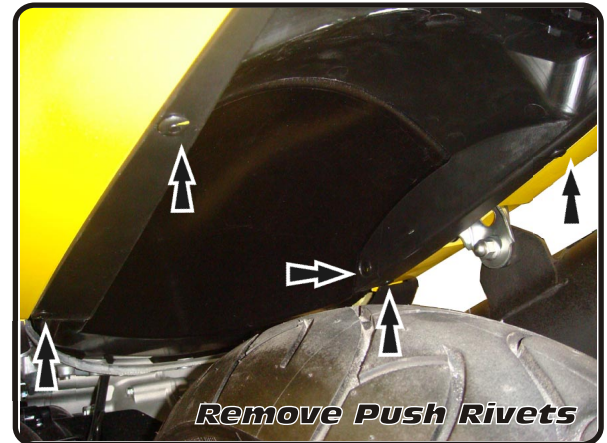


Fig. 5

- Install Yoshimura muffler mount bracket using supplied bolt and stock nut. Torque to 16.5 lb-ft (22 Nm).
- Install supplied rubber grommet into the Yoshimura muffler mount bracket.
- Insert aluminum spacer into the rubber grommet from the outside of vehicle.
- Install the Yoshimura muffler onto the Yoshimura header. Be sure that muffler is fully seated onto header.
- Install the slotted heatshield to the inside of the Yoshimura muffler clamp.
- Install muffler clamp onto Yoshimura muffler.

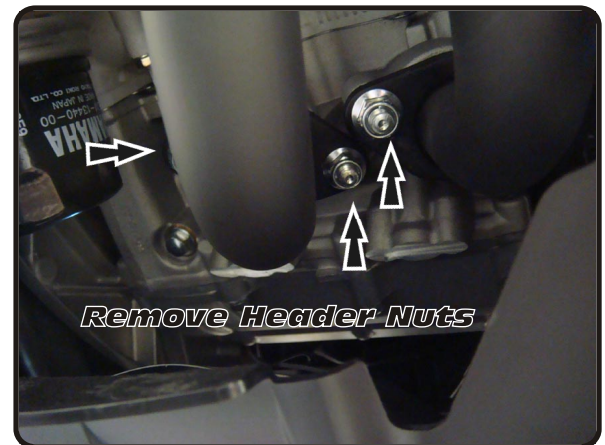


Fig. 6

- Bolt muffler to Yoshimura muffler mount bracket using supplied hardware. Orientation is as follows: Supplied bolt, Yoshimura muffler clamp, Aluminum spacer, Rubber grommet (Inserted into Yoshimura muffler mount bracket), Supplied washer, Supplied Nut. Leave loose, do not torque at this time.

- Insert the header manifolds into their respective exhaust ports and install stock nuts over flanges. Verify that the stock exhaust gaskets are in the exhaust ports. If damaged, new exhaust gaskets will be needed. Torque to 14 lb-ft (18 Nm).

- Install O2 sensor onto Yoshimura system. Torque 32.0 lb-ft (45 Nm).

- Install exhaust springs using supplied spring puller tool.

- Torque muffler mounting bolt to 16.5 lb-ft (22 Nm).

Check for proper clearance between new exhaust system and rear suspension (i.e. tire, swing-arm, brake, rear shock etc). Adjustment of tailpipe and/or muffler may be necessary to achieve desired fit. If any problem is found, please carefully follow through the installation steps again. If problem still persists, please call Yoshimura technical department at (800) 634-9166 / in CA (909) 628-4722

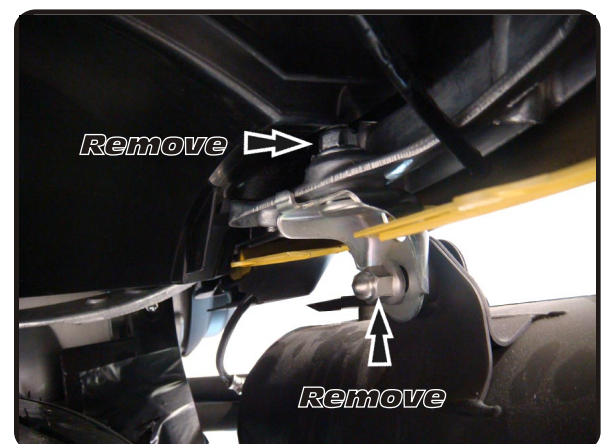


Fig. 7

- Connect O2 Sensor connector.
- Reinstall side cover.
- Reinstall undertail using reverse steps of removal.
- Reinstall rear fender.
- Connect the license plate light.
- Reinstall the small undertail cover.

NOTE: It is recommended that the muffler and tailpipe be wiped down with rubbing alcohol to remove oil and fingerprints. This will help prevent tarnishing of the finish after the exhaust is heated up.

**** NOTE:** After starting the vehicle, it is normal for a new exhaust system and muffler to emit smoke until oil residue burns off

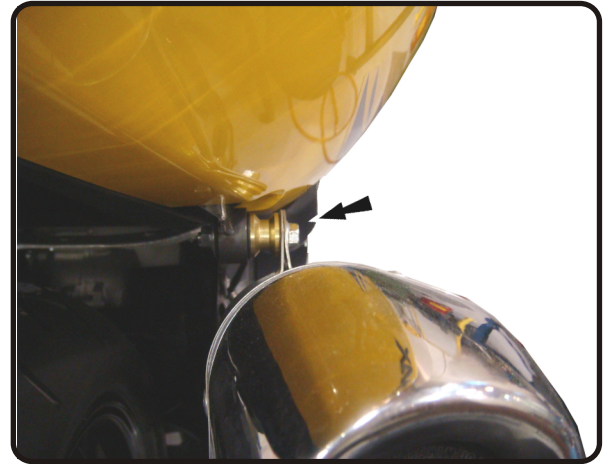


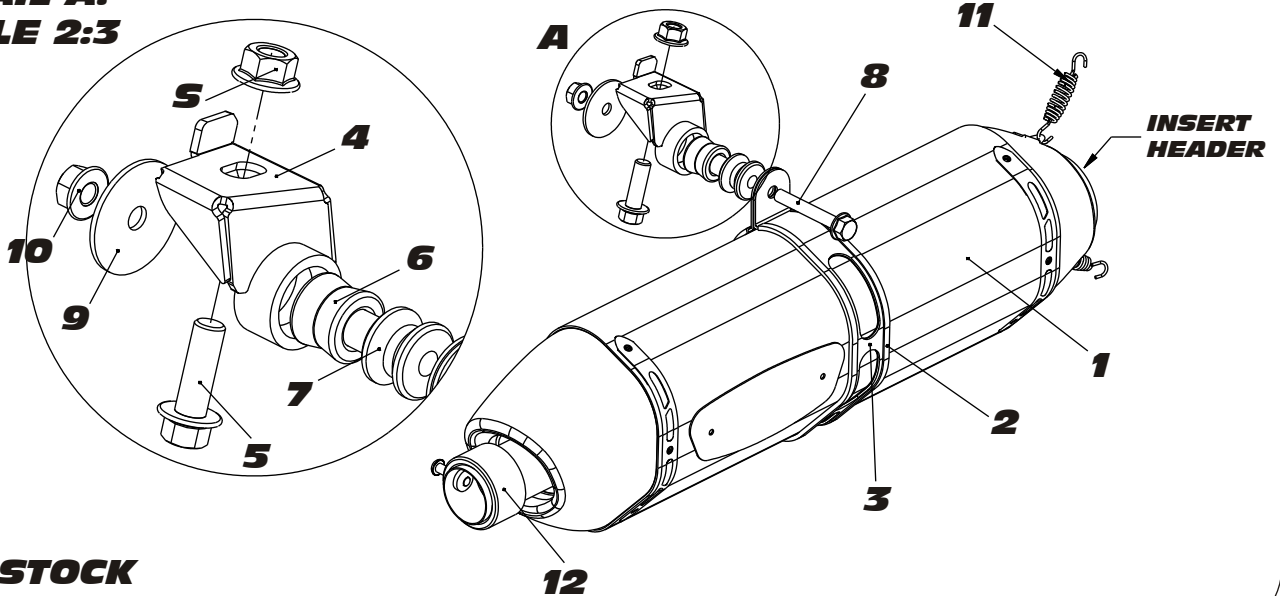
Fig. 8



Fig. 9

#139000(2,6)

**DETAIL A:
SCALE 2:3**



S=STOCK

Parts Diagram

NO.	DESCRIPTION	QTY	PART #
1	Yoshimura R77 Muffler; Stainless Steel Yoshimura R77 Muffler; Carbon Fiber	1	1195006-RMA 1195002-RMA
2	Slotted Heatshield for R77	1	HT SHLDR77
3	R77 Muffler Clamp for Stainless Steel Sleeve R77 Muffler Clamp for Carbon Fiber Sleeve	1	1121-MPCAX 1121-MPCA
4	1390 Muffler Bracket	1	1390-BKT
5	10mm X 30mm Flanged Hex Head Bolt	1	M10X30H
6	Rubber Grommet for Muffler Bracket	1	011257-00
7	Aluminum Spacer	1	ALS-009
8	8mm X 55mm Flanged Hex Head Bolt	1	M8X55H
9	8mm Washer Large	1	8MMWASHERL
10	8mm Nut	1	8MMNUT
11	Medium Race Spring	2	RACE-82MM
12	Yoshimura Quiet Insert Kit for 1390006 for 1390002	1	INS-03-K INS-04-K
**	Yoshimura Header (Not Shown)	1	1390-101
**	Spring Puller Tool	1	ST-200
**	Yoshimura Sticker Kit Sheet	1	17029